



**GRYFINO**

# **Crooked Forest an unusual place**



**GRYFIŃSKIE  
SPACEROWNIKI**





★ **TIP** – Pay attention to the location of the trees and the way and direction of their bend.

★ **TIP** – Pay attention to the vertical furrows at the base of the trees. Find the cut marks on each of them. What do you think? What is it? You can find an explanation of the hypothesis by reading the walking guide.

## The Crooked Forest phenomenon

The Crooked Forest, also called „Fairy Tale Forest” by the residents, is located in Nowy Czarnów, four kilometers from Gryfino, near the Dolna Odra Power Plant. It is a cluster of over 100 uniquely curved pines growing in the area of 0.5 ha. The trees have been recognized as a natural monument and are under protection. The forest belongs administratively to the Gryfino Forestry Management – Pniewo Forest District.

Each year, this place is visited by many tourists, artists, photographers, and explorers of secrets from various regions of Poland, and from abroad. The availability and uniqueness of the Crooked Forest makes it a must-see during your stay in Western Pomerania. It is one of the most recognized places in the region.

We encourage you to look for the answer to the question – how was the Crooked Forest created? Search the field for our tips to make your own discoveries! The creation of Crooked Forest is estimated at 1934. In the only existing dendrological study on it, created in 1971 by prof. Eugeniusz Ćwikliński, we can learn that the forest covered an area of 1600 m<sup>2</sup>. At that time, the area was covered with as many as 400 deformed pines occupying 22 rows spaced 120 cm apart. It is the primal symmetry of tree distribution that supports the hypothesis that it is a well-thought-out human creation.



Photo from the collection of the Public Library in Gryfino provided by Aleksander Dąbkiewicz.



Photos from the chronicle of the Secondary School Complex No. 2 in Gryfino.



# The Crooked Forest Mystery

We have few scientific sources about the creation of the Crooked Forest. However, there are hypotheses trying to explain the unusual phenomenon of curvatures and bulges.

Sometimes they are very rational, sometimes they are completely improbable. Are they real? Check on your own!

## Hypothesis 1. Tanks

There is a belief among local residents that the forest was created as a result of damage to young trees done by tanks grouped in this place in the spring of 1945. Damage to young shoots of pines by stationed vehicles could cause the plant to bend in its initial growth stage.



## Hypothesis 2. Human activity

Someone shaped a young tree by cutting the trunks of young trees or removing their tops and drawing a curve from one of the side shoots. Why? Perhaps it was a craft formation intended for the construction of carriages to transport hay from the nearby Międzyodrze. This area served, i.a., for animal breeding and hay harvesting. The carriages had the shape of a barrel, so the curved tree made it easier to create an appropriate structure.



### Hypothesis 3.

## Sleigh

As in the case of the construction of carriages, the grown tree was to be used to facilitate the construction of horns for a sleigh. In the forest surroundings a local craft workshop could have existed. Unfortunately, it is impossible to find any references to it in the available sources.

### Hypothesis 4.

## Sanatorium

Perhaps the nearby sanatorium has created a local tourist attraction? Perhaps someone had a great idea to create a tourist attraction for patients? The Crooked Forest then becomes a deliberate action, formed by the hand of a botanist or forester.

### Hypothesis 5.

## Christmas tree plantation

A local grower grew Christmas trees for Christmas sale. He cut down the trees for sale, leaving only a side shoot, waiting for the trees to grow again and use the remainder of the stand. Is it likely? In this case, the precision of the same cuts in the rows seems puzzling.



## Hypothesis 6.

### UFO

“A forest from a different world.” Is it a creation of an alien civilization?

## Hypothesis 7.

### The electromagnetic field and water veins

Could the electromagnetic field existing in this place cause symmetrical bulges on young plants? Or maybe it is the result of the water veins running under this forest?

## Hypothesis 8.

### Pests

There are pests and diseases that cause deformation of forest complexes. But is it possible on such a scale and in the same way on each tree, as in the Crooked Forest?



.....  
 ★ **TIP** – What could the curved trunk-shaped wooden elements of the Crooked Forest be used for?  
 .....

Hints about the use of curves by craftsmen seem to be very likely. The symmetry of plantings speaks in favour of man-made trees. Curved pines could be used as an element facilitating the formation of wooden products: sledge, furniture, barrels, carriages, forms for tables, etc.



## What could the mechanical process of bending trees look like?

On each of the trees, just above the ground, in the place where the trunks bend to form a curvature, you can find traces proving that unusual deformations are a reminder of deliberate human activity. These are characteristic thickened furrows that were formed in the places where the trunks of young trees were cut and bent in one direction.

All the trees that make up the Crooked Forest have curves pointing to the north. Why? Because they were incised on the south side (30 – 50 cm above the ground) and bent just towards the north. Perhaps the trees were stripped of all shoots, leaving only the main shoot, i.e. the top, which, growing further above the deformation site, „straightened” the tree. Or maybe the role of such a tip was taken over by one of the side shoots, which remained after removing all the others? Do you think it was possible to shape the forest in this way?





## The aging process of the Crooked Forest

You will notice a lot of dead trees.

You may ask – why?



**The Crooked Forest** is an element of animate nature. Due to the age and history of its formation, many of the trees that make it up slowly begin to wither (either in whole or in fragments). It is a natural process and it is impossible to stop it. Those that pose a risk to visitors to this place are (legally) removed \* and left for natural decay as the so-called dead wood.

With the death of the tree, its new life begins. Decomposition of wood is an important process that creates a new start for an existing forest ecosystem. Any lying logs, trunks, branches are elements of dead wood. They are left in the Crooked Forest on purpose. According to the life cycle of nature, they are the habitat of many coexisting organisms (microorganisms, insects, mushrooms).

\* Art. 45 sec. 2 point 4 of the Environmental Protection Act.



## Revitalization project

We meet the questions that are probably appearing in your head right now: What's next for the Crooked Forest? Will it naturally die out? Will we forget about it?

No. We have a specific idea to continue our joint adventure in this place. It is based on the desire to extend the phenomenon of this place, to continue the legend of the extraordinary world of dancing pines, to protect it against the natural process of dying, to leave a memento for our children and grandchildren.

**The revitalization of the Crooked Forest is possible thanks to the joint involvement of the Gryfino Commune, the Gryfino Forestry Management, the PGE Foundation and the PGE Group.**

A joint idea envisages, i.e., land development and making it available for tourist traffic, without interfering with its natural substance. Soon some stylized elements of small architecture, alleys and information points will be built here.

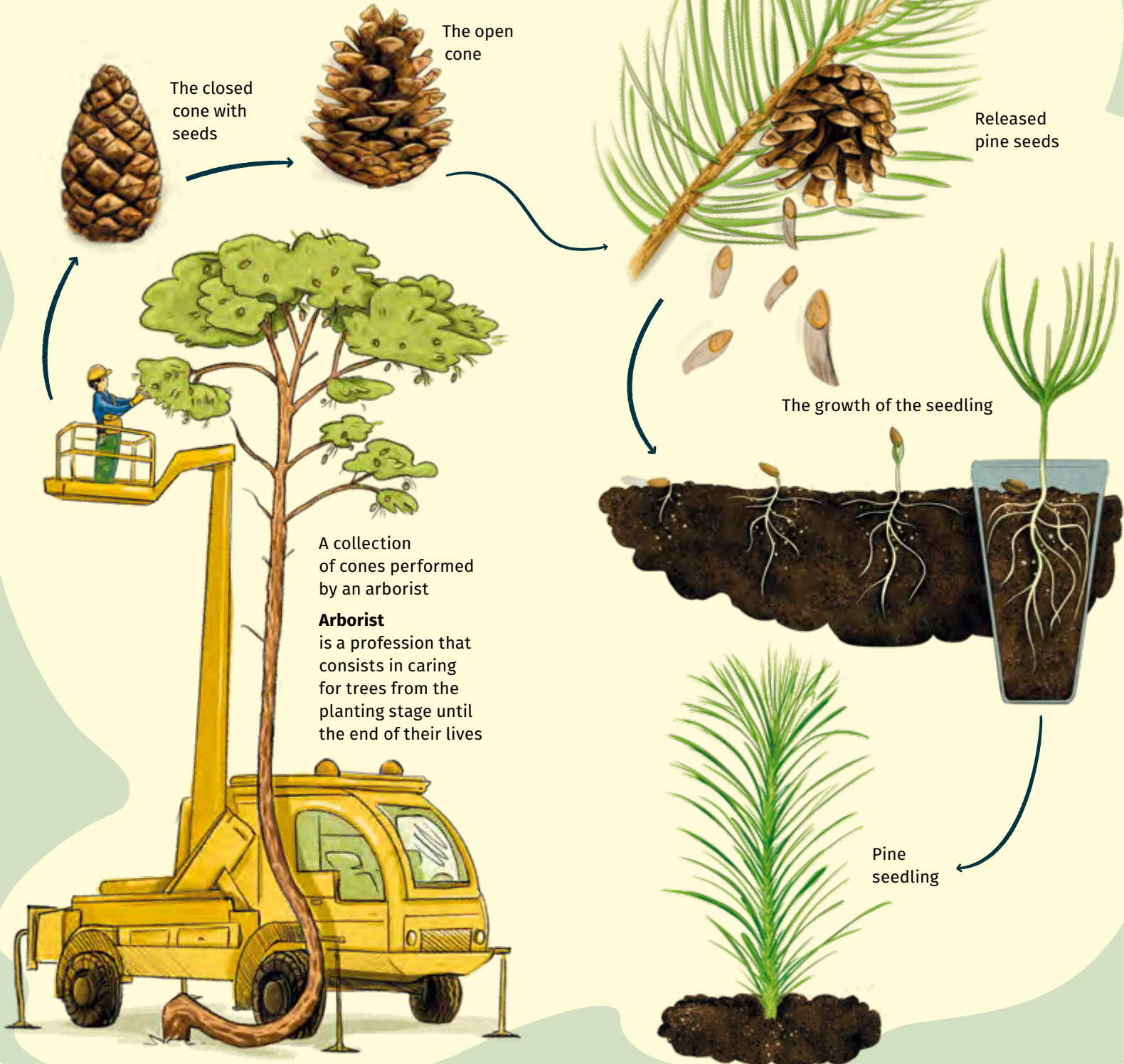
In the vicinity of the Crooked Forest, two alternative areas will also be created. On one of them, seedlings will be planted, obtained from seeds collected from the trees forming the Crooked Forest. Here you will be able to observe whether the growing, young pines will repeat the features of their parents, showing, for example, a tendency to trunks curvature. On the other surface, pine seedlings will be mechanically deformed in the future. All this in order to achieve the same effect, which will make the Crooked Forest remain on the tourist map of Poland for a long time, using the probable methods used by the creators of today's Crooked Forest.

Perhaps thanks to this, we will soon find an answer to the question – how was the Crooked Forest created? We invite you to follow the current information on this subject on the website [krzywylas.pl](http://krzywylas.pl) and in social media:

[facebook.com/krzywylas](https://www.facebook.com/krzywylas), [instagram.com/krzywylas](https://www.instagram.com/krzywylas).

We encourage you to join the adventure with the Crooked Forest – we can create its future together, leaving a mark for future generations. It will be a great journey through learning, fun and experience.

# The process of creating a new forest





## Find your place HERE

Find your place in the Crooked Forest, touch a tree trunk, soft moss or needles. Experience the magic of this place. Stop the time. Gaze at the sky above the fairytale forest.



### Trivia

Consider whether a finished furniture element could have looked like this?

Explore the Crooked Forest more deeply through your senses. Sound, smell. Feel the scented gold of pine, the pleasant smell of resin. The smell of the forest changes depending on the season or day. Your trip doesn't have to be a one-time trip. It is worth being here more often.

Moisture, essential oils, morning dew or fog changes the way you perceive this place. We encourage you to take pictures. Take a photo and leave it on social media with the hashtag #krzywylas.

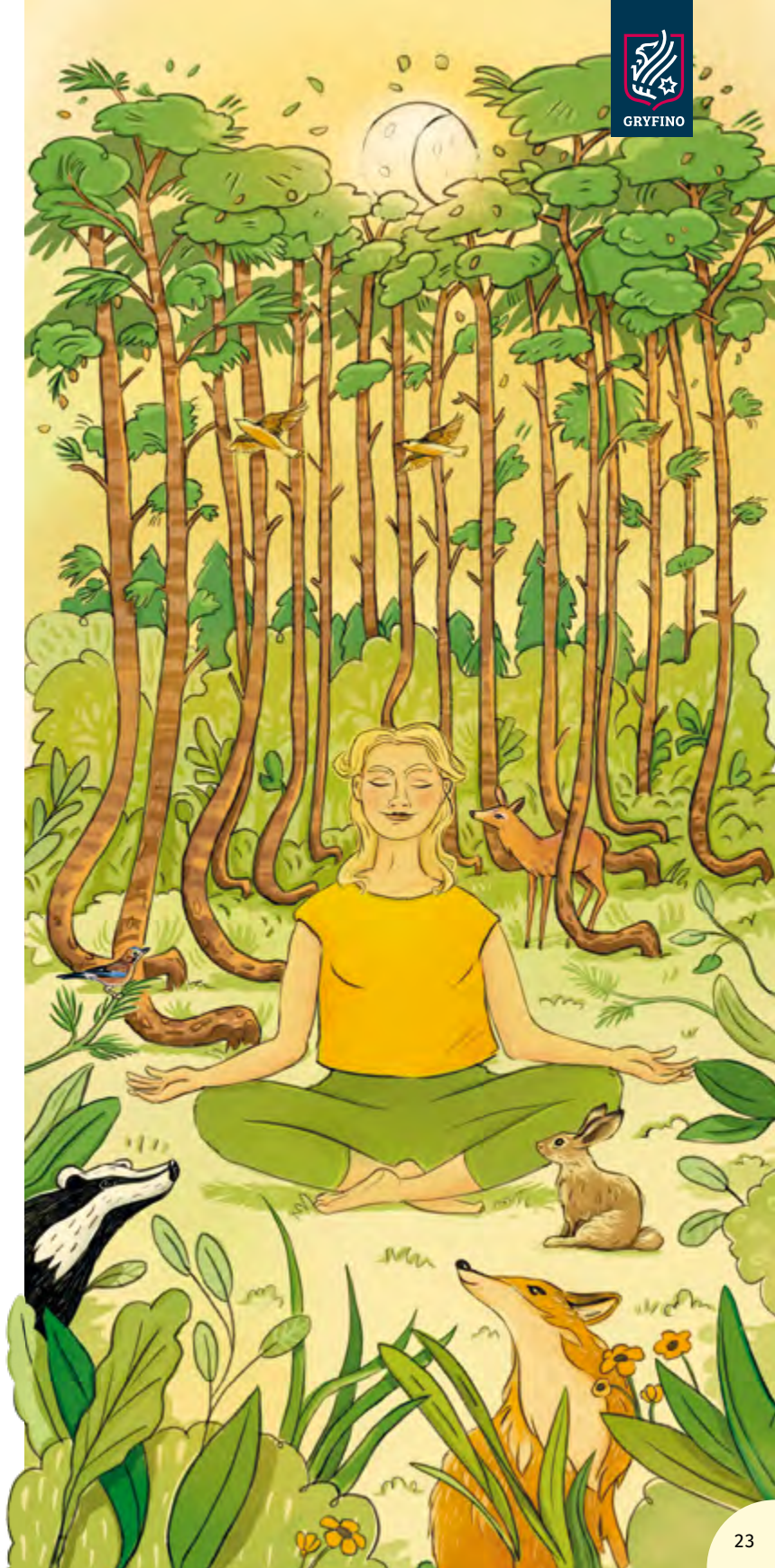
We will find them and create a gallery of discovering the mysteries of this place.

The Crooked Forest is a unique place that stimulates the imagination, sharpens the senses and allows you to open to the beauty of nature.

**Remember that this place deserves special care, because it is one of a kind. Let us respect them so that they may arouse our curiosity and delight our senses for a long time.**

The trees that make up this unique natural monument are already many years old, they are an aging tree stand.

Touch trees, curves, cuts, but don't step on trees.





## How to reach it?

Driving along the S-3 road towards the sea (or coming back from holiday), turn at the Gardno junction towards Gryfino. From Gryfino we go to Nowe Czarnowo near the Dolna Odra Power Plant (this direction is also called „Dolna Odra”, and this is how the public transport buses are marked).

It is impossible to get lost – this is where the high chimneys of the power plant are.

Driving on the motorway from Berlin towards Poland, take the Penkun junction towards the border crossing in Mescherin.

In the close vicinity of the Krzywy Las there are stops: PKP – Railway (Dolna Odra) and PKS – Bus (Nowe Czarnowo, Krzywy Las NŻ – on demand stop). Buses and trains from Szczecin run here.

The red tourist trail leads from the road in Nowy Czarnów to the Crooked Forest.



The Gryfino Commune map is available free of charge at the Tourist Information Center in Gryfino

## Discover other secrets of the Gryfino Commune!



Whose face is visible on the tile in the wall of the church in Wettyń?



What riddles hide the meandering canals of Międzyodrze?



Is there a wreck of a Soviet tank at the bottom of Lake Trzemeszno?



Whose paw was imprinted on the medieval wall in Gryfino?

## Contact



**Tourist Information Centre  
in Gryfino**

### **Tourist Information Centre in Gryfino**

ul. Nadodrzańska 1, 74-100 Gryfino

☎ 789 035 121

✉ [cit@osir.gryfino.pl](mailto:cit@osir.gryfino.pl)

f [cit.gryfino](https://www.facebook.com/cit.gryfino)

The Tourist Information Centre in Gryfino provides information on leisure and free time activities in and around the Gryfino commune, tourist attractions, cultural, tourist and sports events, as well as accommodation and catering facilities.

### **Town and Commune Office in Gryfino**

ul. 1 Maja 16, 74-100 Gryfino

☎ 91 416 20 11

✉ [gmina@gryfino.pl](mailto:gmina@gryfino.pl)

[www.gryfino.pl](http://www.gryfino.pl)

### **Gryfino Forestry Management**

ul. 1 Maja 4, 74-100 Gryfino

☎ 91 416 20 71

✉ [gryfino@szczecin.lasy.gov.pl](mailto:gryfino@szczecin.lasy.gov.pl)

[www.gryfino.szczecin.lasy.gov.pl](http://www.gryfino.szczecin.lasy.gov.pl)



The PGE Foundation is a strategic partner for the revitalization of the Crooked Forest. The project is part of the „Forests Full of Energy” program implemented by the PGE Group since 2000.



GRYFINO



Lasy Państwowe



Fundacja

:: Publisher: Gryfino Commune

:: Illustrations and project: JellyFox Studio Paulina Tomaszewska

**KRZYWYLAS.PL**

 Find us on  
Facebook